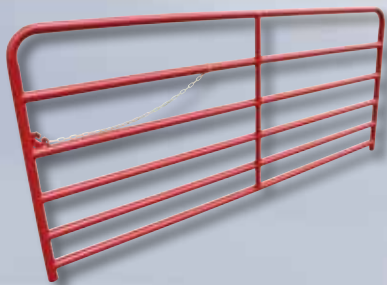


# Hastings<sup>®</sup>

*Equity Manufacturing*  
A DIVISION OF DUTTON-LAINSON COMPANY





In 1910, Hastings Equity Manufacturing was founded in Hastings, Nebraska with a commitment to quality and service in the sheet metal fabrication industry. As our original name indicated, the first main product category from Hastings Equity was grain bins. Over 100 years later, a lot has changed. Even though we haven't made a grain bin in over 50 years, we still have the same commitment to service and quality that we have had for over 100 years. Hastings Equity Manufacturing now focuses primarily on the manufacturing of steel and polyethylene stock tanks. We also make additional lines of diverse products to service agricultural and industrial needs, and we have extensive custom sheet metal and roto-molding manufacturing capabilities.

In 2011, Hastings Equity Manufacturing was bought by the Dutton-Lainson Company, which is also located in Hastings. Dutton-Lainson Company brought more than 125 years of quality, U.S.-based manufacturing experience to the mix, along with extensive resources and support. At the time of the acquisition, Hastings Equity's sister company, Doerr Metal Products of Larned, Kansas, was consolidated with the Hastings operations. We now run multiple production shifts and our own 6-truck fleet out of the 150K square foot facility in Hastings. We work hard every day to meet our customers' needs from our own back yard in Nebraska, to as far from home as Montana, California, Texas and Florida.

# TABLE OF CONTENTS

## Stock Tanks

- ◆ Steel Round Tanks . . . . . 4
- ◆ Steel Round End Tanks . . . . . 5
- ◆ Bottomless Tanks . . . . . 6
- ◆ Poly Stock Tanks . . . . . 7

## Feeders & Oilers

- ◆ Wik Oiler/Feeder . . . . . 8-9
- ◆ Mineral Feeders . . . . . 10
- ◆ Bale Rings . . . . . 11
- ◆ Kettle Kaker . . . . . 14

## Gates & Panels

- ◆ Gates . . . . . 12
- ◆ Panels . . . . . 12
- ◆ Gate Accessories . . . . . 13

## Plugs & Accessories

- ◆ Stock Tank Plugs . . . . . 4
- ◆ Prop Shaft Guards . . . . . 14

## Polyethylene Tanks & Accessories

- ◆ Dura-LIFE® Storage System . . . . . 16
- ◆ Vertical Storage Tanks & Stands . . . . . 17-18
- ◆ Econo Skid & Tank Units . . . . . 19
- ◆ Horizontal Tanks & Units . . . . . 20
- ◆ Pickup Tank . . . . . 21
- ◆ Containment Tank & Skid Unit . . . . . 21
- ◆ Bulk Hopper Tank . . . . . 21
- ◆ Drums . . . . . 22
- ◆ Fittings & Accessories . . . . . 23

# STOCK TANKS

The Hastings Black Label stock tank (p.4-5) has been the standard of the steel stock tank industry for decades. We understand that producers need reliable, long-term infrastructure when watering their livestock. In a world where products have been cheapened or are often times imported from overseas manufacturers, we know that cheap won't cut it.

We continue to make our steel stock tanks with the highest quality labor and materials. We offer our Black Label tanks featuring 20GA, G90 steel throughout and an unmatched 5-year warranty. We also offer our Green Label tanks with 22GA sidewalls as a value tank with a 1-year warranty. For your convenience, we offer these tanks in a wider variety of sizes than any other tank manufacturer in the world. No other manufacturer puts the focus and attention to detail on stock tanks like we do.



HD0602



HP208



BT123320

In addition to our standard lines of steel tanks, we also offer a full line of bottomless (p.6) and polyethylene (p.7) stock tanks. Both of these lines were developed to match the unsurpassed standard of quality that Hastings Equity Manufacturing is known for. We are confident that we have a stock tank product to meet every need imaginable.



# STEEL ROUND TANKS

## Features

- ◆ Made with Certified G90 galvanized steel throughout
- ◆ Black Label tanks are 20GA throughout
- ◆ Green Label tanks have 22GA sidewalls and 20GA bottoms
- ◆ Bottoms attached to sidewall with a 4-ply lock seam and sealant for maximum leak protection
- ◆ .875" steel pipe rolled into the top rim of each tank for strength and rigidity (3'-10' diameters)
- ◆ 11' tanks have a 1.5" angle ring on top for added strength
- ◆ Widest variety of sizes and gallonages available
- ◆ Many sizes available in both a 2' and 1' sheep tank depth to meet most needs



HD0602

### 2131



.75" zinc plated plug that comes standard installed in all Hastings stock tanks. (Except for our 11' tank. See 2152 below.)

### 2152



.75" polyethylene plug and flange unit that comes standard with our 11' stock tank.

### S-200



.75" steel plug and flange unit that can be ordered as an alternative to Model 2152 for 11' stock tanks.

Steel Round Tanks	Model Number	Size (Width x Depth)	Tanks in a Nest	Approx. Capacity (gallons)	Approx. Wt. 20GA (lbs.)	Approx. Wt 22GA (lbs.)
	HD0302	3' x 2'	2	101	47	38
	HD0402	4' x 2'	3	180	66	55
	HD0502	5' x 2'	3	281	89	75
	HD0602	6' x 2'	3	404	116	106
	HD0702	7' x 2'	3	550	148	134
	HD0802	8' x 2'	3	718	171	150
	HD0902	9' x 2'	3	909	210	183
	HD1002	10' x 2'	3	1122	265	225
	HD1102	11' x 2'	3	1358	303	N/A
<b>SHEEP TANKS</b>						
HGS0301	3' x 1'	2	48	N/A	29	
HGS0401	4' x 1'	3	86	N/A	47	
HGS0501	5' x 1'	3	134	N/A	62	
HGS0601	6' x 1'	3	192	N/A	84	
HGS0701	7' x 1'	3		N/A		
HGS0801	8' x 1'	3	342	N/A	122	

\* All tank sizes are nominal. Most sizes are nested in small, medium, and large to optimize freight expense.

\*\* 22GA model numbers in the 2' depth begin with HG instead of HD



# STEEL ROUND END TANKS

## Features

- ◆ Great for many uses in addition to stock tanks (landscaping, beverage coolers, and industrial uses, to name just a few)
- ◆ Made with Certified G90 galvanized steel throughout
- ◆ Black Label tanks are 20GA throughout
- ◆ Green Label tanks have 22GA sidewalls and 20GA bottoms
- ◆ Bottoms attached to sidewall with a 4-ply lock seam and sealant for maximum leak protection
- ◆ .875" steel pipe rolled into the top rim of each tank for strength and rigidity
- ◆ 3' x 2' x 8' and 3' x 2' x 10' have a cross brace for added strength
- ◆ Widest variety of sizes and gallonages available
- ◆ Many sizes available in both a 2' and a 1' sheep tank depth to meet most needs

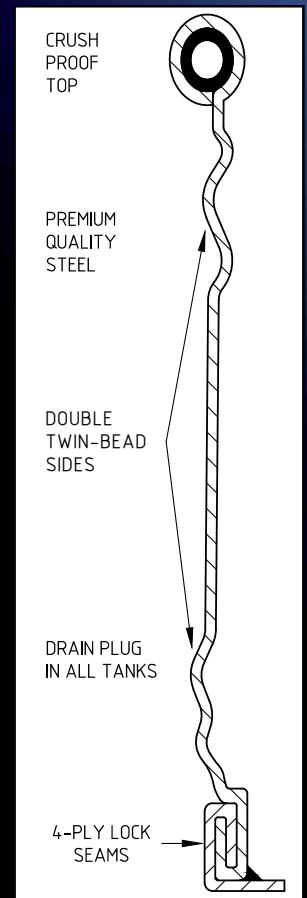


HD20206

Steel Round End Tanks	Model Number	Size (Width x Depth x Length)	Tanks in a Nest	Approx. Capacity (gallons)	Approx. Wt. 20GA (lbs.)	Approx. Wt. 22GA (lbs.)
	HD20203	2' x 2' x 3'	2	74	42	32
	HD20204	2' x 2' x 4'	3	102	53	44
	HD20205	2' x 2' x 5'	3	131	63	54
	HD20206	2' x 2' x 6'	3	159	71	64
	HD25206	2.5' x 2' x 6'	3	195	75	69
	HD25207	2.5' x 2' x 7'	3	231	88	80
	HD25208	2.5' x 2' x 8'	3	266	101	90
	HD30208	3' x 2' x 8'	3	314	113	97
	HD30210	3' x 2' x 10'	3	400	137	120
SHEEP TANKS						
HGS20104	2' x 1' x 4'	3	48	N/A	34	
HGS20105	2' x 1' x 5'	3	62	N/A	40	
HGS20106	2' x 1' x 6'	3	75	N/A	46	
HGS20108	2' x 1' x 8'	3	103	N/A	58	

\* All tank sizes are nominal. Most sizes are nested in small, medium, and large to optimize freight expense.

\*\* 22GA model numbers in the 2' depth begin with HG instead of HD



TANK SIDEWALL CUTAWAY DIAGRAM



HGS20104



# BOTTOMLESS TANKS

**NEW & IMPROVED**

## Features



- ◆ Available in 10GA or 12GA G90 galvanized steel
- ◆ 33" sidewall height for added gallonage
- ◆ Rolled hem on top of the tank provides safety and decreased installation time (no tricky angle irons to bolt on the top)
- ◆ Sheets are notched on the end for complete compression of the seams, meaning fewer leaks for you
- ◆ Our new bottomless tank design still features a lapped seam with butyl tape and double row bolts. However, we have increased to a .375 steel bolt and whiz lock nut. This strong combination enabled us to cut the number of fasteners for each tank by 50% and eliminate washers. The result is a faster, easier install decreasing your labor costs!

The Hastings bottomless tank is the only one on the market that is actually engineered to be a bottomless tank. While our competitors use repurposed or rejected grain bin sheets, we utilize a design that works much better for livestock watering needs, and lasts much longer.

Bottomless Tanks	Number of Sections	Diameter	Approx. Capacity (gallons)
	6	15'	2644
	8	20'	4700
	10	25'	7343
	12	30'	10575

\*Odd sizes available from 10' up to 40' in 2.5' increments

\*\* Gallons are based on a 2' water depth and 7.48 gallons per cubic foot

\*\*\* Tanks also available in a 25" sidewall height. Call for availability.



**Hastings**  
Equity Manufacturing  
A DIVISION OF BUTTON-LAINSON COMPANY

# POLY STOCK TANKS

## Features

This is the most rugged poly tank on the market. It features a closed-lip design that is incredibly strong and won't buckle to crowding livestock. It is the first and only lip of its kind on the market. Each tank is made of 100% high density virgin polyethylene so the tanks won't rust or corrode. They are resistant to feedlot acids and are compounded to resist UV damage and cracking from the sun. 2' deep tanks have a screw-in drain plug and all the tanks come standard in Hastings Grey.



HPSQ70208

We offer a full line of sizes to meet your needs. We are the only tank manufacturer in the world that currently offers a 10' poly tank. At 1,100 gallons, it has almost as much capacity as a 10' steel tank. All of our poly tanks are designed to stack and come with a 3-year warranty on material and workmanship.

Poly Stock Tanks	Model Number	Size (Width x Depth x Length)	Approx. Capacity (gallons)	Approx. Wt. (lbs.)	Drain Plug
	HP206	6' x 2'	320	55	Yes
	HP208	8' x 2'	580	83	Yes
	HP210	10' x 28"	1100	135	Yes
	ROUND END TANKS				
	HP20204	2' x 2' x 4'	97	28	Yes
	HP20206	2' x 2' x 6'	160	43	Yes
	HP20104	2' x 1' x 4'	60	18	No
	HP20106	2' x 1' x 6'	89	25	No
	RECTANGULAR POLY TANKS				
HPSQ70208	7' x 28" x 8'	750	145	Yes	

\*Tank sizes are nominal as the lip makes actual overall dimensions larger



HP20206



HP208



HP20106



Our poly tank lips are so big and strong, they need a special bracket for mounting floats. Our float support kit (HP12FS-K) will work with any aftermarket float.

\*pictured with Little Giant float; not included





# The WIK<sup>®</sup>

## Automatic Self-Treating Insecticide Applicators

- ◆ The original automatic insecticide applicator
- ◆ Developed in Kansas in the 1950s
- ◆ Top grade all steel and canvas construction for years of performance
- ◆ Durable powder coated finish
- ◆ No moving parts to break and malfunction = NO DOWNTIME
- ◆ Wide base to prevent tipping (12' wide by 8.5' tall)
- ◆ Insect treatment
  - Decreases animal stress
  - Drives weight gain
  - Increases profits

### Ultimate Series

Ultimate Series	Ultimate 1
	WIK Base Stand + Mineral Feeder Assembly + Dairy Matic Mop Oiler + 1 Scratchmatic
Ultimate Series	Ultimate 2
	WIK Base Stand + Mineral Feeder Assembly + Dairy Matic Mop Oiler + 2 Scratchmatics



Ultimate 2 with optional wheel transport kit.





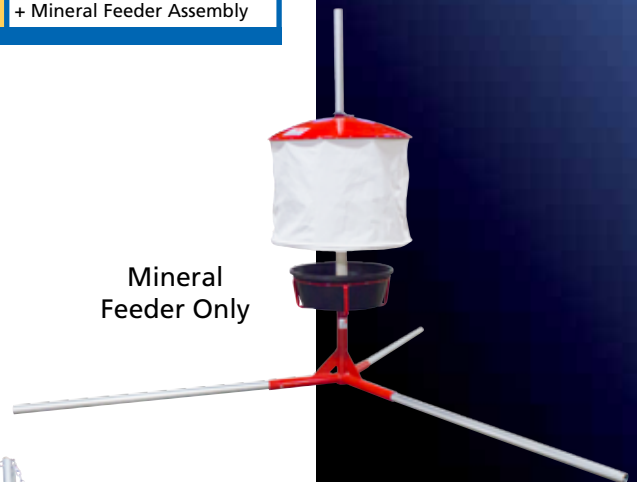
# Supreme Series



Supreme 2

<b>Supreme Series</b>	<b>Mineral Feeder Only</b>	
	WIK Base Stand	
	+ Mineral Feeder Assembly	
	<b>Supreme 1</b>	
	WIK Base Stand	
	+ 1 Scratchmatic	
	+ Mineral Feeder Assembly	
	<b>Supreme 2</b>	
	WIK Base Stand	
	+ 2 Scratchmatics	
	+ Mineral Feeder Assembly	
	<b>Supreme 3</b>	
	WIK Base Stand	
	+ 3 Scratchmatics	
	+ Mineral Feeder Assembly	

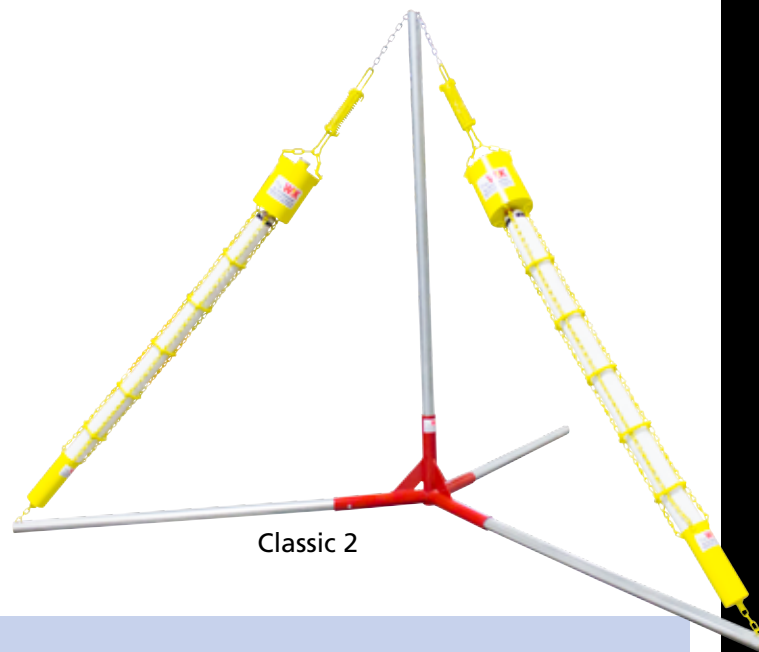
The **WIK**



Mineral Feeder Only

# Classic Series

<b>Classic Series</b>	<b>Classic 1</b>	
	WIK Base Stand	
	+ 1 Scratchmatic	
	<b>Classic 2</b>	
	WIK Base Stand	
	+ 2 Scratchmatics	
	<b>Classic 3</b>	
	WIK Base Stand	
	+ 3 Scratchmatics	



Classic 2

## Customize

- ◆ Set units up however works best for your operation
- ◆ Call about accessories and replacement parts
- ◆ Use WIK units in stand-alone applications like exit alleys
- ◆ Ask about optional lick-tub upgrade



**Hastings**  
Equity Manufacturing  
A DIVISION OF DUTTON-LAINSON COMPANY

# MINERAL FEEDERS

## Features

Our MFLP130 feeder is one of the toughest and most durable low profile feeders on the market today. We make this two-compartment unit out of virgin polyethylene for long-lasting strength and durability. The unit weighs 42 lbs. and is 36" in diameter. It comes with a .5" thick rubber flap to protect your precious mineral from the elements. It can hold 100 lbs. of mineral and has three stake-down locations. Extra high sidewalls prevent cattle from stepping into the feeder.

**We also offer a three-compartment low profile feeder that weighs 57 lbs and is 36" in diameter. It is slightly more rugged with a higher sidewall than its two-compartment counterpart. It holds 200 lbs of mineral. Model # MFSLP100 (pictured).**



MFSLP100



Our MFS100 vertical spinning feeder is new and improved. It features a wider 52" circular base with a heavier unit weight of 70 lbs. to avoid tipping. The hood is made out of virgin polyethylene while the 14GA steel base is coated to resist feedlot acids. With a 23" clearance from the ground, the two-compartment hood can house 100 lbs. of mineral to be protected from the elements.



MFS100



# BALE RINGS

## Features

We sell two different models of round bale feeders to meet the needs of the most demanding producers. Both the cattle ring and the horse ring are made out of top quality 14GA steel and powder coated red. They are designed and manufactured to withstand years of abuse in the field. Both feeders are three piece units that measure 8' when assembled. The cattle ring weighs 170 lbs and the horse ring weighs 228 lbs.

GBF1583FS  
170 lbs



HF1497  
228 lbs



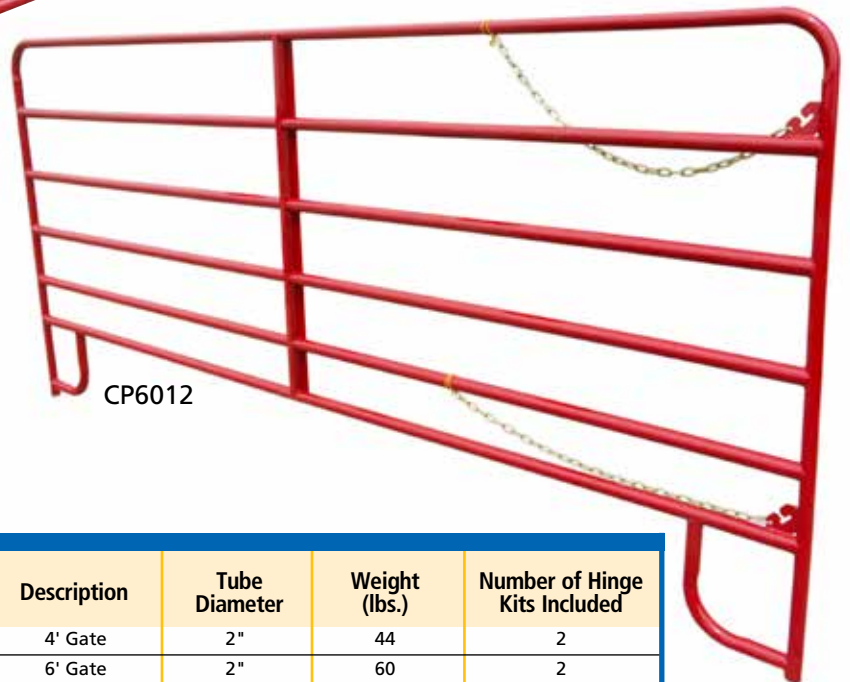
# GATES AND PANELS

## Features

These gates and panels are simply the best around. Made completely out of 16GA material, they are built to last. They feature six horizontal bars with every joint mitered and machine welded 360°. Gates are finished with a powder coated red and all come with “twist-a-lock” latches accompanied with 34" of chain. These gates have a lifetime warranty against being torn up by livestock.



GT2012



CP6012

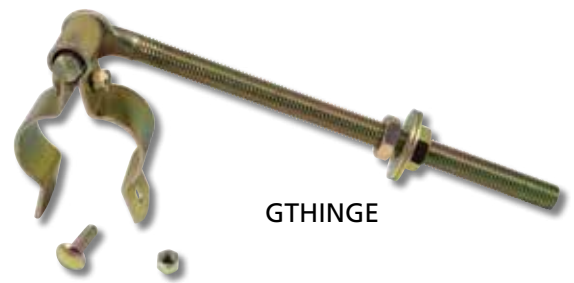
Gates and Panels	Model Number	Description	Tube Diameter	Weight (lbs.)	Number of Hinge Kits Included
	GT2004	4' Gate	2"	44	2
	GT2006	6' Gate	2"	60	2
	GT2008	8' Gate	2"	84	2
	GT2010	10' Gate	2"	100	2
	GT2012	12' Gate	2"	118	2
	GT2014	14' Gate	2"	140	2
	GT2016	16' Gate	2"	157	2
	GT2018	18' Gate	2"	182	3
	GT2020	20' Gate	2"	193	3
<b>PANELS</b>					
CP6010	10' Panel	1.625"	79	N/A	
CP6012	12' Panel	1.625"	98	N/A	



# GATE ACCESSORIES

## Gate Hinge

This is the standard, zinc plated .75" hinge kit that goes out with each gate. Kit includes bolt, nut, and clamp. (Also available in Heavy-Duty adjustable design.)



GTHINGE



GW-1

## Gate Wheel

Our gate wheels bolt directly to the bottom of a gate for ease of opening and closing on longer span gates. Wheel comes with all necessary parts and hardware for mounting.

## Gate Anchor

This gate anchor is a must have to stop shorter span gates from swinging back and forth on their hinges while in the open position. This anchor will firmly hold any gate in place and comes with all parts and hardware for mounting.



SS-1



R-158-2

## Two-Way Gate Anchor

Our two-way gate latch is ideal for a gate that must be able to open either back or forward. This latch catches and closes a swinging gate automatically without any latch manipulation. Latch comes with all necessary parts and hardware for mounting.

## One-Way Gate Anchor

Our one-way gate latch is suited for a gate that only needs to be opened in one direction. This latch catches and closes a swinging gate automatically without any latch manipulation. Latch comes with all necessary parts and hardware for mounting.



OWR-158-2

# KATTLE KAKER

## Features

Hastings' Kattle-Kaker lets you feed range cake, pellets, wafers, or cubes without leaving the cab of your pickup, safe from crowding and trampling cattle. You can even load bin from your bulk supply or sacks before going to pasture. In snow, our popular rear delivery model (KK01) gives added efficiency by dropping feed directly in the ready-made feed trough formed by your tire track.

The fully-welded angel frame provides a solid base. The bin is made of 18GA galvanized steel with a hinged weather proof cover that provides a large 16" x 33" fill opening. Its spring-loaded dispensing gate provides control of flow at your desired rate, and it can be operated remotely from the cab using the provided nylon rope and positive action pulleys. Its retractable dispensing chute is a non-clog design that handles all sizes of pellets, cubes, and wafers. The KK01 has an offset chute with a full six-inch adjustment, which allows placement of feed into a tire track. The KK02 has a straight chute that is 10"W x 24"L.

These units have a capacity of 500 lbs. and measure 36"L x 35"W x 36"H. They have a shipping weight of 121 lbs. and are covered by a 1-year warranty against workmanship and defects.



Filling View



# PROP SHAFT GUARDS

## Features

Prop Shaft Guards	Model Number	Diameter	Minimum Length	Maximum Length	Weight (lbs.)
	PSG10-18	7"	10"	18"	6
	PSG24-42	7"	24"	42"	12
	PSG36-54	7"	36"	54"	15
	PSG36-66	7"	36"	66"	18
	PSG14-24	12"	14"	24"	13
	PSG3666	12"	36"	66"	27
	PSG28-54	15"	28"	54"	28

- ◆ Meets OSHA requirements
- ◆ Endorsed by farm safety authorities
- ◆ Protection against loss of life or limb
- ◆ Adapts to any internal combustion engine
- ◆ Rigid construction from galvanized steel
- ◆ Maintains a neat appearance year after year



PSG 36-54

*"Permanent protection you can't afford to be without"*

Unprotected prop-shaft on your irrigation wells can maim or kill almost instantly. Prevent potential tragedy during pumping season with a Hastings Prop-Shaft Guard permanently in place at each of your wells. Fast and easy to install on most pump engines, they have a 2" slot on bottom for lubrication.



# POLY STORAGE TANKS

## Features

In 2008, Hastings Equity Manufacturing bought a company called Centennial Molding as a means of being able to manufacture our own polyethylene stock tanks. Due to that acquisition, we now have a full line of roto-molded polyethylene products that we are proud to offer to our customers. All of these products are made in Hastings, Nebraska.

Although there are many reputable suppliers of molded plastic products, none surpass our commitment to quality and durability. All of our **Dura-LIFE®** molded products are made from our exclusive **Origimold™** process. Unlike many molders, we do not regrind discarded materials, assuring your product is made from



100% specified virgin polyethylene materials. Additionally, all of our resins meet FDA specifications to ensure safe storage of food and potable water. They also contain ultraviolet stabilizers to prevent sunlight deterioration and extend product life.

We don't just claim our products are great, we back it up. Our exclusive **Warranty 55™** is unsurpassed by any other in the industry. Quite simply, it is a 5-year unconditional warranty on materials and workmanship for both molded products and metal fabricated accessories for molded products.



# DURA-LIFE® STORAGE SYSTEM

## Features



US Patent  
#6,772,912

The new and improved Dura-LIFE® Storage System provides a neat, clean way to transport and store lubricants and liquids. It has molded-in forklift pockets for easy transporting and stacking, easy-to-read gallon indicators, and comes standard with 2-2" threaded openings on top with caps as well as 2-1" threaded openings on front of the tank for plumbing versatility.

Tanks	Model Number	Gallons	Length	Width	Height	Approx. Wt. (lbs.)
	T-0075-032	75	34"	34"	25.5"	44
	T-0120-032	120	34"	34"	34"	60
	T-0165-032	165	34"	34"	45.5"	100

## Accessories

We offer a full line of accessories to complete your Dura-LIFE® Storage System. Our new stands and pans feature 12GA galvanized steel and are the toughest on the market. The 24" stand (model #M-0120-ESMG- pictured) or deluxe 36" stand (M-0120-ESMG-36) is available with an optional drip pan (M-0120-GPAN- pictured). We also offer a 1'D x 3.5'W x 5'L 100 gal spill tank (HGS350105) for added safety.

M-0120-ESMG



M-0120-GPAN

Dim.	Model Number	Length	Width	Height
	M-0120-ESMG	35"	35"	24.25"
	M-0120-ESMG-36	35"	35"	36"

Since all of our tanks are stackable, we offer single (F-SGFK-100), double (F-DGFK-100), and triple (F-TGFK-100- pictured left) gravity fill kits for your convenience.

Our gravity fill kits come with all necessary hoses, connectors, elbows, and clamps (faucets not included). We offer a Morrison 1" brass ball valve (F-MBF-100- pictured right) or a Banjo poly 1" ball valve (F-BLVL-100).



F-MBF-100



Manufactured in the



**Hastings**  
Equity Manufacturing  
A DIVISION OF BUTTON-LAINSON COMPANY



# VERTICAL STORAGE TANKS

## Features

Vertical storage tanks are among the most commonly used tank, fitting a wide range of applications. Dura-LIFE® tanks can be used to transport liquids as well as provide stationary storage, due to their free-standing capabilities. We offer a large range of sizes and three different styles. All vertical tanks come with a gallonage indicator, vented fill lid, and outlet fitting.



B



C



A

Vertical Storage Tanks	Model Number	Gallons	Dia.	Height	Fill Size	Outlet Size	Approx. Wt. (lbs.)	Style	Tie Downs
	T-0095-056	95	24"	56"	6"	1.5"	35	A	NO
	T-0110-042	110	31"	42"	6"	1.5"	38	A	YES
	T-0165-042	165	37"	42"	6"	1.5"	50	A	YES
	T-0165-059	165	31"	59"	6"	1.5"	50	A	YES
	T-0220-042	220	43"	42"	6"	1.5"	60	A	YES
	T-0220-072	220	31"	72"	6"	1.5"	65	A	YES
	T-0300-059	300	43"	59"	6"	1.5"	75	B	YES
	T-0330-042	330	53"	42"	6"	1.5"	75	A	YES
	T-0500-062	500	54"	62"	6"	2"	125	C	YES
	T-0500-074	500	47"	74"	6"	2"	125	A	YES
	T-0925-099	925	54"	99"	8"	2"	190	A	YES
	T-1100-064	1100	80"	64"	16"	2"	220	C	YES
T-1500-067	1500	90"	67"	16"	2"	240	C	NO	



# VERTICAL TANK STANDS

## Deluxe Vertical Tank Stands

Constructed of heavy gauge steel and finished with a chemical resistant coating, we offer a complete range of stands in both short and tall models to fit your specific needs.

Deluxe Tank Stands	Model Number	Gallons	Dia.	Height	Approx. Wt. (lbs.)
	M-0095-I18	95	25"	18"	50
	M-0095-I38	95	25"	38"	75
	M-0110-I18	110-165-220	32"	18"	65
	M-0110-I38	110-165-220	32"	38"	80
	M-0165-A18	165	38"	18"	100
	M-0165-A38	165	38"	38"	130
	M-0220-A18	220-300-B	44"	18"	115
	M-0220-A38	220-300-B	44"	38"	130
	M-0330-A38	330	51"	18"	130
	M-0330-A38	330	51"	38"	160
	M-0500-I18	500	51"	18"	130
	M-0500-I38	500	51"	38"	150
	M-0500-S18	500	48"	18"	110
M-0500-S38	500	48"	38"	140	



M-0110-I38

M-0110-I18

## Econo Vertical Tank Stands

Econo Tank Stands	Model Number	Gallons	Dia.	Height	Approx. Wt. (lbs.)
	M-0110-E18	110-165-220	32"	18"	60
	M-0165-E18	165-220-300	44"	18"	110
	M-0500-E18	500	51"	18"	120

Constructed of heavy gauge steel and finished with a chemical resistant coating, the Econo Vertical Tank Stand will handle the same weights as the Deluxe Vertical Tank Stand at an economical price.



M-0165-E18

M-0500-E18

M-0110-E18



# ECONO SKID & TANK UNITS

## Skid and Tank Units

This sturdy unit is constructed with heavy gauge steel side channels and heavy wood floors, overlaying a steel constructed frame, providing a quality skid unit at an economical price. The patented Dura-LIFE® “Loaf” designed skid tank provides a very low center of gravity for stability in forklifting and transportation. A recessed sump is molded into the tank for complete drainage. All units come complete with a gallonage indicator, outlet fitting, fill lid, E.P.D.M. gasket, and threaded vent plug for a positive seal.



U-0300-ESM

Skid Units	Model Number	Gallons	Length	Width	Height	Approx. Wt. (lbs.)
	U-0210-ESM	210	50"	46"	40"	280
	U-0300-ESM	300	50"	46"	49"	395
	U-0500-TES	500	50"	46"	79"	555
	U-0800-ESM	800	80"	72"	54"	680
	U-1200-ESM	1200	80"	72"	71"	780

## Skid Tanks

The Dura-LIFE® “Loaf” designed skid tanks can be purchased separately but will not come with all of the fittings provided for the complete skid unit. These tanks need to be contained in some sort of skid after purchase to prevent sidewall bulging. We do not offer any warranty on skid tanks alone.



T-0210-034

Skid Tanks	Model Number	Gallons	Length	Width	Height	Lid Size	Outlet Size	Approx. Wt. (lbs.)
	T-0210-034	210	44"	40"	40"	6"	2"	90
	T-0300-043	300	44"	40"	43"	6"	2"	120
	T-0500-073	500	44"	40"	73"	6"	2"	175
	*T-0500-047	500	71"	40"	47"	6"	2"	175
	T-0800-048	800	72"	64"	48"	16"	2"	200
	T-1200-064	1200	72"	64"	64"	16"	2"	300

\* Tank has no paired skid unit (sold as stand-alone tank).



# HORIZONTAL TANKS & UNITS

## Horizontal Tanks



T-0300-076

Horizontal cylinder tanks are perfect for industrial and agricultural applications. All tanks come complete with a gallonage indicator, fill lid, and outlet fitting. A horizontal stand, saddle skid, or cradle is necessary for support of the Dura-LIFE® horizontal cylinder tanks.

Horizontal Tanks	Model Number	Gallons	Dia.	Length	Lid Size	Outlet Size	Approx. Wt. (lbs.)
	T-0110-046	110	30"	46"	6"	1.5"	35
	T-0300-076	300	38"	76"	6"	1.5"	100
	T-0500-078	500	48"	78"	6"	1.5"	150

## Saddle Skid Units



U-0150-047

Our saddle skid and horizontal tank units are low profile and come in a wide range of sizes. Our stands are constructed out of heavy gauge steel and finished with a chemical resistant coating and include a gallonage indicator, fill lid, and outlet fitting.

Saddle Skid Units	Model Number	Gallons	Length	Width	Height	Approx. Wt. (lbs.)
	U-0110-037	110	49"	32"	37"	237
	U-0300-049	300	77"	41"	49"	466
	U-0500-057	500	81"	52"	57"	572

## Horizontal Tank & Stand Units

Our horizontal stands and Dura-LIFE® horizontal cylinder tanks come in a wide range of sizes. Our stands are constructed out of heavy gauge steel and finished with a chemical resistant coating. They include a gallonage indicator, fill lid, and outlet fitting.



U-0110-079

Tank & Stand Units	Model Number	Gallons	Length	Width	Height	Approx. Wt. (lbs.)
	U-0110-079	110	46"	31"	79"	225
	U-0300-087	300	76"	39"	87"	376
	U-0500-097	500	78"	49"	97"	475

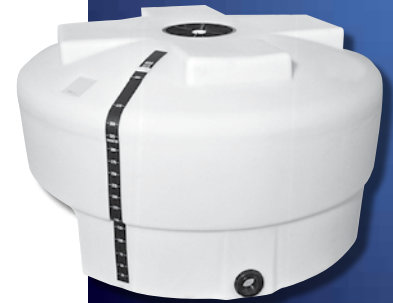


# SPECIALTY TANKS

## Pickup Tank

Our Dura-LIFE® pickup tank's low profile and recessed lid gives better rear vision and fits all full-size pickups, even those with a toolbox. This pickup tank also comes complete with a gallonage indicator, fill lid, and outlet fitting.

Pickup Tank	Model Number	Gallons	Dia.	Height	Lid Size	Outlet Size	Approx. Wt. (lbs.)	Tie Downs
	T-0400-036	400	66"	36"	12"	2"	110	YES



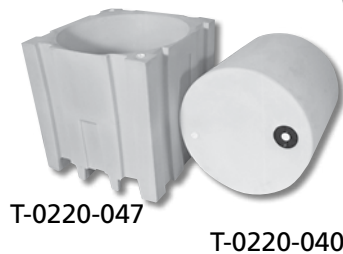
## Containment Tank & Skid Units

This unit is uniquely designed with safety in mind to satisfy any of your containment needs. The Dura-LIFE® skid provides two thick polyethylene walls that protect the inner 220-gallon tank, making this unit virtually indestructible. With the molded-in forklift channels, this unit is easy to handle and comes complete with a filler cap. The skid and tank can also be purchased separately (see below).

Unit	Model Number	Gallons	Width	Height	Approx. Wt. (lbs.)
	U-0220-CTS	220	46"	47"	185

Skid	Model Number	Gallons	Width	Height	Approx. Wt. (lbs.)
	T-0220-047	220	46"	47"	125

Tank	Model Number	Gallons	Width	Height	Approx. Wt. (lbs.)
	T-0220-040	220	41.5"	40.5"	60



## Bulk Hopper Tank

The Dura-LIFE® Bulk Hopper tank is perfect for handling, transporting, and storage of materials such as seeds, grains, and other granular materials that can flow through an 11" opening. The stainless steel slide gate provides easy unloading and the molded forklift pockets provide easy handling. These tanks are stackable when full to minimize storage space and are nestable when empty for space-saving storage and return transport. If you're tired of handling bags or sacks, this is the tank for you. These tanks also include a molded lid and hopper funnel cone to ensure complete material removal.

Hopper Tank	Model Number	Bushels	Top Dia.	Bottom Dia.	Outlet Dia.	Height	Approx. Wt. (lbs.)
	T-0030-049	30	45.5"	44"	11.75"	49.5"	76



# DRUMS

## Sealable Open Head Drums



Our Dura-LIFE® Drums are the most versatile, durable, and reusable on the market. Our drums require no restraightening or rework as compared to steel drums. With the heavily constructed walls, they will outlast a blow molded drum many times over. Applications include shipping or storing chemicals, oil products, cleaning products, industrial chemicals, concrete chemicals, inks, food products, commercial detergents, and many other uses. Our Dura-LIFE® drums are available in Tight Head, Sealable Open Head, and Slip On Lid styles to meet your specific application. The Sealable Open Head Drum comes standard with a 304 grade stainless steel drum ring. Our drums meet FDA specifications and are lightweight to reduce your shipping costs.

Sealable Open Head Drums	Model Number	Gallons	Dia.	Height	Wall Thickness	Approx. Wt. (lbs.)
	D-0015-SOH	15	15.75"	24.25"	.187"	8
	D-0030-SOH	30	19"	31.5"	.187"	16
	D-0055-SOH	55	23"	37.5"	.200"	27

## Tight Head Drums



Tight Head Drums	Model Number	Gallons	Dia.	Height	Wall Thickness	Approx. Wt. (lbs.)
	D-0015-THD	15	15.75"	25.25"	.187"	7
	D-0030-THD	30	19"	33"	.187"	15
	D-0055-THD	55	23"	38.5"	.200"	26

## Slip on Lid Drums



Slip on Lid Drums	Model Number	Gallons	Dia.	Height	Wall Thickness	Approx. Wt. (lbs.)
	D-0015-SOL	15	15.75"	24.25"	.187"	7
	D-0030-SOL	30	19"	31.5"	.187"	15
	D-0055-SOL	55	23"	37.5"	.200"	26



# FITTINGS AND ACCESSORIES

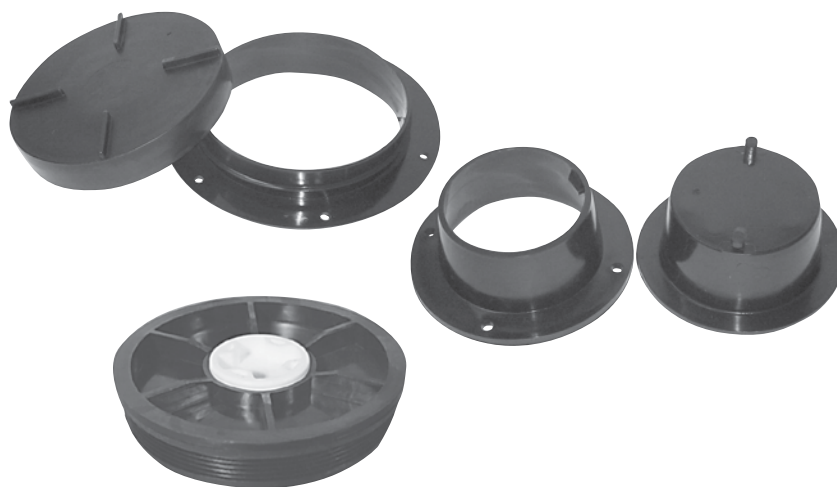
Unlike many molders, we manufacture all our polyethylene Dura-LIFE® fittings to ensure the same high quality provided in our Dura-LIFE® tanks and drums. Our Dura-LIFE® fittings are made from the same field of material to ensure the same chemical resistance as our tanks and drums.

If you can't find what you need, give us a call. We offer custom fittings and accessories to meet your specific application. We also offer replacement components for our metal stands and skids upon request.



Fittings/Gaskets	Model Number	Description
	F-BKHD-075	.75" Polyethylene Outlet Fitting
	F-BKHD-100	1" Polyethylene Outlet Fitting
	F-BKHD-125	1.25" Polyethylene Outlet Fitting
	F-BKHD-150	1.5" Polyethylene Outlet Fitting
	F-BKHD-200	2" Polyethylene Outlet Fitting
	F-B200-150	2.5" Polyethylene Outlet Fitting
	F-BBKHD-300	3" Polyethylene Outlet Fitting
	F-EPDM-075	.75" EPDM Gasket
	F-EPDM-150	1.5" EPDM Gasket
F-EPDM-200	2" EPDM Gasket	

Lids/Assem.	Model Number	Description
	F-FLCP-600	6" Filler Lid
	F-FLCPA-800	8" Filler Cap Assembly
	F-FLCPA-1200	12" Filler Cap Assembly
	F-FLCPA-1600	16" Filler Cap Assembly



Plugs/Drum Parts	Model Number	Description
	F-40PL-075	.75" Sch 40 PVC Plug
	F-40PL-100	1" Sch 40 PVC Plug
	F-40PL-150	1.5" Sch 40 PVC Plug
	F-40PL-200	2" Sch 40 PVC Plug
	F-0015-GSK	15 Gal Drum Gasket
	F-0030-GSK	30 Gal Drum Gasket
	F-0055-GSK	55 Gal Drum Gasket
	F-0015-RNG	15 Gal Drum Ring
	F-0030-RNG	30 Gal Drum Ring
	F-0055-RNG	55 Gal Drum Ring
	F-DRPL-075	.75" Polypropylene Drum Plug
	F-DRPL-200	2" Polypropylene Drum Plug

"Farmers Coop chose Hastings as our tank supplier about 4 years ago. Our supplier at the time continued to have problems with quality and the desire to fix those problems for our customers. Since choosing Hastings our tank business has grown and our customer satisfaction has improved. We have had only two tank problems and both were quickly handled to the customer's satisfaction. Our manager's confidence in selling stock tanks has also improved. We would encourage other companies to look to Hastings as their tank supplier and enjoy the confidence we have in selling a quality product."

*Jay Carter, CEO – Farmers Coop – Van Buren, AR*

"We have enjoyed working with Hastings for over ten years. We have found their product quality, service and pricing to be always excellent."

*Tom Jordan, Owner – Stockyards Ranch Supply – Commerce City, CO*

"One look at Hastings Poly and Steel Tanks I knew they were one of the best if not the best on the market. What I found most exciting was that we were able to maintain our margin and lower the retail. Win Win!"

*Brian Bonner, Operations Manager – Russell Feed & Supply – Ft. Worth, TX*

"Western Ranch Supply has been a dealer for Hastings Tanks for the past 20 years. We switched to Hastings because their tanks are the stoutest made we have come across. Every tank is consistent and we don't have to order full trucks in order to get them to Montana. This is very nice because we can really control our inventory and they are very easy to get along with. Hastings Tanks fit our philosophy of carrying the best products for our customers."

*Shayne Vandivort, Owner – Western Ranch Supply – Billings, MT*

**Hastings**  
**Equity Manufacturing**  
A DIVISION OF DUTTON-LAINSON COMPANY

Copyright © Jorn Olsen

P.O. Box 1007 • 1900 Summit Ave. • Hastings, Nebraska 68902-1007  
Phone: 402-462-2189 • Toll Free: 888-883-2189 • Fax: 402-462-2900  
[www.hastingstank.com](http://www.hastingstank.com)



A Dependable Company Since 1886

**DUTTON-LAINSON COMPANY**  
Hastings, NE U.S.A. 68902 • Tel 402-462-4141 • Fax 402-460-4612  
[www.dutton-lainson.com](http://www.dutton-lainson.com) • E-mail [dlsales@dutton-lainson.com](mailto:dlsales@dutton-lainson.com)

