

Hastings[®]

Equity Manufacturing
A DIVISION OF DUTTON-LAINSON COMPANY



Hastings[®]
Equity Manufacturing
A DIVISION OF DUTTON-LAINSON COMPANY

ABOUT US



In 1910, Hastings Equity Manufacturing was founded in Hastings, Nebraska with a commitment to quality and service in the sheet metal fabrication industry. As our original name indicated, the first main product category from Hastings Equity was grain bins. Over 100 years later, a lot has

changed. Even though we haven't made a grain bin in over 50 years, we still have the same commitment to service and quality that we have had for over 100 years. Hastings Equity Manufacturing now focuses primarily on the manufacturing of steel and polyethylene stock tanks. We also make additional lines of diverse products to service agricultural and industrial needs, and we have extensive custom sheet metal and roto-molding manufacturing capabilities.

In 2011, Hastings Equity Manufacturing was bought by the Dutton-Lainson Company, which is also located in Hastings. Dutton-Lainson Company brought more than 135 years of quality, U.S.-based manufacturing experience to the mix, along with extensive resources and support. At the time of the acquisition, Hastings Equity's sister company, Doerr Metal Products of Larned, Kansas, was consolidated with the Hastings operations. We now run multiple production shifts and our own 5-truck fleet out of the 150K square foot facility in Hastings. We work hard every day to meet our customers' needs from our own back yard in Nebraska, to as far from home as Montana, California, Texas, Florida, Europe, Middle East, Australia, and Japan.

Table of Contents

3	STEEL ROUND TANKS	13	DURAPATCH UV™ & POLY STORAGE TANKS
4	STEEL ROUND END TANKS	14	DURA-LIFE® STORAGE
5	BOTTOMLESS TANKS	15	VERTICAL STORAGE TANKS
6	POLY STOCK TANKS	16	VERTICAL TANK STANDS
7-8	TANK LIFESTYLE	17	ECONO SKID & TANK UNITS
9	WIK OILERS & FEEDERS	18	HORIZONTAL TANKS/UNITS
10	MINERAL FEEDERS & BALE RINGS	19	SPECIALTY TANKS
11	GATES AND PANELS	20	FITTINGS & ACCESSORIES
12	KATTLE KAKER & PROP SHAFT GUARDS	21-22	CUSTOM MANUFACTURING SERVICES



STEEL ROUND TANKS

STEEL ROUND END TANKS



FEATURES

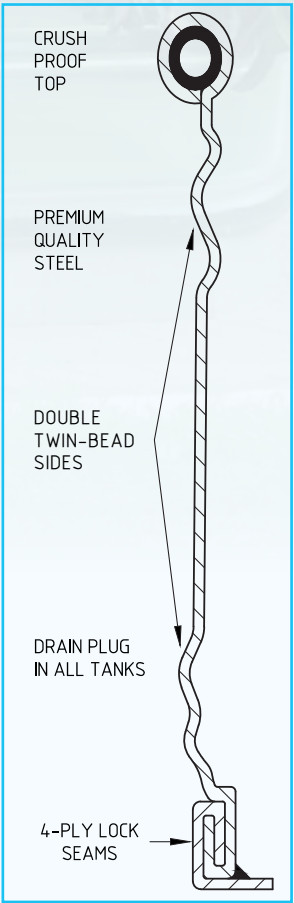
- Great for many uses in addition to stock tanks (landscaping, beverage coolers, and industrial/lifestyle uses, to name just a few)
- Made with Certified G90 galvanized steel throughout
- Green Label tanks have 22GA sidewalls and 20GA bottoms
- Bottoms attached to sidewall with a 4-ply lock seam and sealant for maximum leak protection
- .875" steel pipe rolled into the top rim of each tank for strength and rigidity
- 3' x 2' x 8' and 3' x 2' x 10' have a cross brace for added strength
- Widest variety of sizes and gallonages available
- Many sizes available in both a 2' and a 1' sheep tank depth to meet most needs



HGS20108

MODEL NUMBER	SIZE (W x D x L)	TANKS IN A NEST	APPROX. CAPACITY	APPROX. WT. 20GA	APPROX. WT 22GA
HG20203	2' x 2' x 3'	2	74 gallons	42 lbs	32 lbs
HG20204	2' x 2' x 4'	3	102 gallons	53 lbs	44 lbs
HG20205	2' x 2' x 5'	3	131 gallons	63 lbs	54 lbs
HG20206	2' x 2' x 6'	3	159 gallons	71 lbs	64 lbs
HG25206	2.5' x 2' x 6'	3	195 gallons	75 lbs	69 lbs
HG25207	2.5' x 2' x 7'	3	231 gallons	88 lbs	80 lbs
HG25208	2.5' x 2' x 8'	3	266 gallons	101 lbs	90 lbs
HG30208	3' x 2' x 8'	3	314 gallons	113 lbs	97 lbs
HG30210	3' x 2' x 10'	3	400 gallons	137 lbs	120 lbs
SHEEP TANKS					
HGS20104	2' x 1' x 4'	3	48 gallons	N/A	34 lbs
HGS20105	2' x 1' x 5'	3	62 gallons	N/A	40 lbs
HGS20106	2' x 1' x 6'	3	75 gallons	N/A	46 lbs
HGS20108	2' x 1' x 8'	3	103 gallons	N/A	58 lbs

* Black labels are not currently in production, but can be discussed on a minimum order quantity. Pricing to be determined.



TANK SIDEWALL CUTAWAY DIAGRAM

FEATURES

- Made with Certified G90 galvanized steel throughout
- Black Label tanks are 20GA throughout
- Green Label tanks have 22GA sidewalls and 20GA bottoms
- Bottoms attached to sidewall with a 4-ply lock seam and sealant for maximum leak protection
- .875" steel pipe rolled into the top rim of each tank for strength and rigidity (3'-10' diameters)
- 11' tanks have a 1.5" angle ring on top for added strength
- Widest variety of sizes and gallonages available
- Many sizes available in both a 2' and 1' sheep tank depth to meet most needs

MODEL NUMBER	SIZE (WIDTH X DEPTH)	TANKS IN A NEST	APPROX. CAPACITY	APPROX. WT. 20GA	APPROX. WT 22GA
HD0302	3' x 2'	2	101 gallons	47 lbs	38 lbs
HD0402	4' x 2'	3	180 gallons	66 lbs	55 lbs
HD0502	5' x 2'	3	281 gallons	89 lbs	75 lbs
HD0602	6' x 2'	3	404 gallons	116 lbs	106 lbs
HD0702	7' x 2'	3	550 gallons	148 lbs	134 lbs
HD0802	8' x 2'	3	718 gallons	171 lbs	150 lbs
HD0902	9' x 2'	3	909 gallons	210 lbs	183 lbs
HD1002	10' x 2'	3	1122 gallons	265 lbs	225 lbs
HD1102	11' x 2'	3	1358 gallons	303 lbs	N/A
SHEEP TANKS					
HGS0301	3' x 1'	2	48 gallons	N/A	29 lbs
HGS0401	4' x 1'	3	86 gallons	N/A	47 lbs
HGS0501	5' x 1'	3	134 gallons	N/A	62 lbs
HGS0601	6' x 1'	3	192 gallons	N/A	84 lbs
HGS0701	7' x 1'	3	262 gallons	N/A	100 lbs
HGS0801	8' x 1'	3	342 gallons	N/A	122 lbs

* All tank sizes are nominal. Most sizes are nested in small, medium, and large to optimize freight expense.

** 22GA model numbers in the 2' depth begin with HG instead of HD

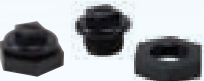
2131

.75" zinc plated plug that comes standard installed in all Hastings stock tanks. (Except for our 11' tank.)



2152

.75" polyethylene plug and flange unit that comes standard with our 11' stock tank.



S-200

.75" steel plug and flange unit that can be ordered as an alternative to Model 2152 for 11' stock tanks.



BOTTOMLESS TANKS

The Hastings bottomless tank is the only one on the market that is actually engineered to be a bottomless tank. While our competitors use repurposed or rejected grain bin sheets, we utilize a design that works much better for livestock watering needs, and lasts much longer.

FEATURES

- Available in 10GA or 12GA G90 galvanized steel
- 33" sidewall height for added gallonage
- Rolled hem on top of the tank provides safety and decreased installation time (no tricky angle irons to bolt on the top)
- Sheets are notched on the end for complete compression of the seams, meaning fewer leaks for you
- Our new bottomless tank design still features a lapped seam with butyl tape and double row bolts. However, we have increased to a .375 steel bolt and whiz lock nut. This strong combination enabled us to cut the number of fasteners for each tank by 50% and eliminate washers. The result is a faster, easier install decreasing your labor costs!

SECTIONS	DIAMETER	APPROX. CAPACITY
6	15'	2644 gallons
8	20'	4700 gallons
10	25'	7343 gallons
12	30'	10575 gallons

*Odd sizes available from 10' up to 40' in 2.5' increments
** Gallons are based on a 2' water depth and 7.48 gallons per cubic foot
*** Tanks also available in a 26" sidewall height. Call for availability.



POLY STOCK TANKS



FEATURES

This is the most rugged poly tank on the market. It features a closed-lip design that is incredibly strong and won't buckle to crowding livestock. Hastings is the leader in closed lip technology. Other companies have copied this design because of its incredible strength. Each tank is made of 100% high density virgin polyethylene so the tanks won't rust or corrode. They are resistant to feedlot acids and are compounded to resist UV damage and cracking from the sun. 2' deep tanks have a screw-in drain plug and all the tanks come standard in Hastings Grey.

We offer a full line of sizes to meet your needs. We are the only tank manufacturer in the world that currently offers a 10' poly tank. At 1,100 gallons, it has almost as much capacity as a 10' steel tank. All of our poly tanks are designed to stack and come with a 3-year warranty on material and workmanship.

MODEL NUMBER	SIZE (W x D x L)	APPROX. CAPACITY	APPROX. WEIGHT	DRAIN PLUG
HP206	6' x 2'	320	55 lbs	Yes
HP208	8' x 2'	580	83 lbs	Yes
HP210	10' x 28"	1100	135 lbs	Yes
ROUND END TANKS				
HP20204	2' x 2' x 4'	97	28 lbs	Yes
HP20206	2' x 2' x 6'	160	43 lbs	Yes
HP20104	2' x 1' x 4'	60	18 lbs	No
HP20106	2' x 1' x 6'	89	25 lbs	No
RECTANGULAR POLY TANKS				
HPSQ70208	7' x 28" x 8'	750	145 lbs	Yes

*Tank sizes are nominal as the lip makes actual overall dimensions larger



Our poly tank lips are so big and strong, they need a special bracket for mounting floats. Our float support kit (HP12FS-K) will work with any aftermarket float.



Tank Lifestyle

The Hastings Black Label stock tank has been the standard of the industry for decades. Now not only are they being used by producers that need reliable infrastructure when watering their livestock, but also on every day home properties. We have been seeing a frequent uphill trend for the use of these tanks in everyday gardens, and the most use of them as reliable swimming pools. Our tanks have become quite a modernized decoration for lots of customers.

We offer our Black Label tanks featuring 20GA, G90 steel throughout and an unmatched 5-year warranty. We also offer our Green Label tanks with 22GA sidewalls as a value tank with a 1-year warranty. For your convenience, we offer these tanks in a wider variety of sizes than any other tank manufacturer in the world. No other manufacturer puts the focus and attention to detail on stock tanks like we do.

PHOTO BY COWBOY POOLS

PHOTO BY TANKKD

PHOTO BY

PHOTO BY



AUTOMATIC SELF-TREATING INSECTICIDE APPLICATORS

- The original automatic insecticide applicator
- Developed in Kansas in the 1950s
- Top grade all steel and canvas construction for years of performance
- Durable powder coated finish
- No moving parts to break and malfunction = NO DOWNTIME
- Wide base to prevent tipping (12' wide by 8.5' tall)
- Insect treatment
- Decreases animal stress, drives weight gain, and increases profits



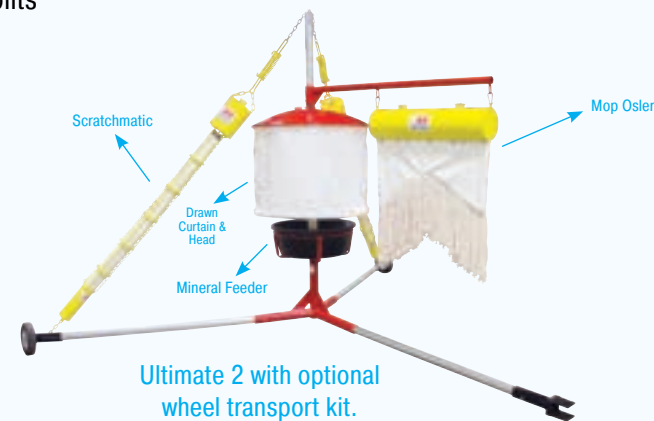
Ultimate Series

ULTIMATE 1

- WIK Base Stand
- + Mineral Feeder Assembly
- + Dairy Matic Mop Oiler
- + 1 Scratchmatic

ULTIMATE 2

- WIK Base Stand
- + Mineral Feeder Assembly
- + Dairy Matic Mop Oiler
- + 2 Scratchmatics



Supreme Series

MINERAL FEEDER ONLY

- WIK Base Stand
- + Mineral Feeder Assembly

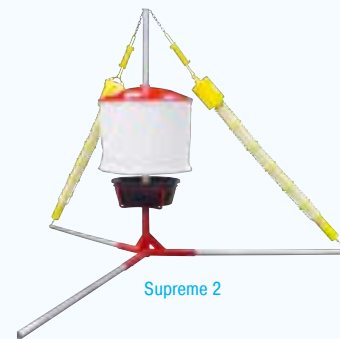


SUPREME 1

- WIK Base Stand
- + 1 Scratchmatic
- + Mineral Feeder Assembly

SUPREME 2

- WIK Base Stand
- + 2 Scratchmatics
- + Mineral Feeder Assembly



SUPREME 3

- WIK Base Stand
- + 2 Scratchmatics
- + Mineral Feeder Assembly

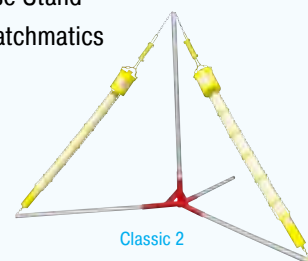
Classic Series

CLASSIC 1 CLASSIC 2

- WIK Base Stand
- + 1 Scratchmatic
- WIK Base Stand
- + 2 Scratchmatics

CLASSIC 3

- WIK Base Stand
- + 3 Scratchmatics



CUSTOMIZE

- Set units up however works best for your operation
- Call about accessories and replacement parts
- Use WIK units in stand-alone applications like exit alleys
- Ask about optional lick-tub upgrade



MFLP300



MFSLP100



MFS100

FEATURES

Our MFLP300 feeder is one of the toughest and most durable low profile feeders on the market today. We make this two-compartment unit out of virgin polyethylene for long-lasting strength and durability. The unit weighs 45 lbs. and is 36" in diameter. It comes with a .5" thick rubber flap to protect your precious mineral from the elements. It can hold 200 lbs. of block salt or mineral and has three stake-down locations. This feeder will hold 300 lbs. of ground mineral or salt, which gives this feeder the largest capacity on the market.

We also offer a three-compartment low profile feeder that weighs 57 lbs and is 36" in diameter. It is slightly more rugged with a higher sidewall than its two-compartment counterpart. It holds 300 lbs of mineral. Model # MFSLP100 (pictured).

Our MFS100 vertical spinning feeder is new and improved. It features a wider 52" circular base with a heavier unit weight of 70 lbs. to avoid tipping. The hood is made out of virgin polyethylene while the 14GA steel base is coated to resist feedlot acids. With a 23" clearance from the ground, the two-compartment hood can house 200 lbs of block salt or mineral to be protected from the elements.

BALE RINGS



Model #99112
250 lbs

Model #99113
270 lbs



FEATURES

We sell two different models of round bale feeders to meet the needs of the most demanding producers. Both the cattle ring and the horse ring are made of top quality 14 gauge 1 1/4" square tubing and come with an 18-gauge skirt painted red. They designed and manufactured to withstand years of abuse in the field. Both feeders are three-piece units that measure 94" in diameter when assembled. The slant bale feeder weighs 250 lbs and the horse crown bale feeder weighs 270 lbs.

GATES AND PANELS

FEATURES

These gates and panels are simply the best around. Made completely out of 16GA material, they are built to last. They feature six horizontal bars with every joint mitered and machine welded 360°. Gates are finished with a powder coated red and all come with “twist-a-lock” latches accompanied with 34” of chain.

MODEL NUMBER	DESCRIPTION	TUBE DIAMETER	WEIGHT	HINGE KITS INCLUDED
GT2004	4' Gate	2"	41 lbs	2
GT2006	6' Gate	2"	55 lbs	2
GT2008	8' Gate	2"	72 lbs	2
GT2010	10' Gate	2"	87 lbs	2
GT2012	12' Gate	2"	100 lbs	2
GT2014	14' Gate	2"	118 lbs	2
GT2016	16' Gate	2"	133 lbs	2
GT2018	18' Gate	2"	152 lbs	3
GT2020	20' Gate	2"	167 lbs	3
PANELS				
CP6010	10' Panel	1.625"	73 lbs	N/A
CP6012	12' Panel	1.625"	84 lbs	N/A



GT2012



CP6012

GATE ACCESSORIES

Gate Hinge

This is the standard, zinc plated .75" hinge kit that goes out with each gate. Kit includes bolt, nut, and clamp. (Also available in Heavy-Duty adjustable design.)

Gate Wheel

Our gate wheels bolt directly to the bottom of a gate for ease of opening and closing on longer span gates. Wheel comes with all necessary parts and hardware for mounting.

Gate Anchor

This gate anchor is a must have to stop shorter span gates from swinging back and forth on their hinges while in the open position. This anchor will firmly hold any gate in place and comes with all parts and hardware for mounting.

Two-Way Gate Anchor

Our two-way gate latch is ideal for a gate that must be able to open either back or forward. This latch catches and closes a swinging gate automatically without any latch manipulation. Latch comes with all necessary parts and hardware for mounting.



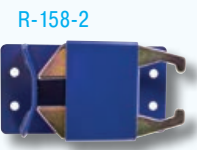
GTHINGE



GW-1



SS-1



R-158-2

KATTLE KAKER

FEATURES

Hastings' Kattle-Kaker lets you feed range cake, pellets, wafers, or cubes without leaving the cab of your pickup, safe from crowding and trampling cattle. You can even load bin from your bulk supply or sacks before going to pasture. In snow, our popular rear delivery model (KK01) gives added efficiency by dropping feed directly in the ready-made feed trough formed by your tire track.

The fully-welded angel frame provides a solid base. The bin is made of 18GA galvanized steel with a hinged weather proof cover that provides a large 16" x 33" fill opening. Its spring-loaded dispensing gate provides control of flow at your desired rate, and it can be operated remotely from the cab using the provided nylon rope and positive action pulleys. Its retractable dispensing chute is a non-clog design that handles all sizes of pellets, cubes, and wafers. The KK01 (*not shown*) has an offset chute with a full six-inch adjustment, which allows placement of feed into a tire track. The KK02 (*shown*) has a straight chute that is 10"W x 24"L.

These units have a capacity of 500 lbs. and measure 36"L x 35"W x 36"H. They have a shipping weight of 121 lbs. and are covered by a 1-year warranty against workmanship and defects.



Filling View



PROP SHAFT GUARDS

FEATURES

- Meets OSHA requirements
- Endorsed by farm safety authorities
- Protection against loss of life or limb
- Adapts to any internal combustion engine
- Rigid construction from galvanized steel
- Maintains a neat appearance year after year

Unprotected prop-shaft on your irrigation wells can maim or kill almost instantly. Prevent potential tragedy during pumping season with a Hastings Prop-Shaft Guard permanently in place at each of your wells. Fast and easy to install on most pump engines, they have a 2" slot on bottom for lubrication.



PSG 36-54

MODEL NUMBER	DIAMETER	MINIMUM LENGTH	MAX LENGTH	WEIGHT
PSG10-18	7"	10"	18"	6 lbs
PSG24-42	7"	24"	42"	12 lbs
PSG36-54	7"	36"	54"	15 lbs
PSG36-66	7"	36"	66"	18 lbs
PSG14-24	12"	14"	24"	13 lbs
PSG3666	12"	36"	66"	27 lbs
PSG28-54	15"	28"	54"	28 lbs

"Permanent protection you can't afford to be without"





FEATURES

- Easy Application
- Fast Cure (15-30 mins)
- Molds to most applications
- Impact Resistant
- Can be drilled, sanded or painted
- Cures rock hard
- Rot-proof & Waterproof



Available in 2" x 3", 3" x 6", 6" x 9" and 9" x 12"



BEFORE



AFTER

Although there are many reputable suppliers of molded plastic products, none surpass our commitment to quality and durability. All of our **Dura-LIFE®** molded products are made from our exclusive process. Unlike many molders, we do not regrind discarded materials, assuring your product is made from 100% specified virgin polyethylene materials. Additionally, all of our resins meet FDA specifications to ensure safe storage of food and potable water. They also contain ultraviolet stabilizers to prevent sunlight deterioration and extend product life. We don't just claim our products are great, we back it up with a 3-year warranty on materials and workmanship for both molded products and metal fabricated accessories for molded products.



FEATURES

The new and improved Dura-LIFE® Storage System provides a neat, clean way to transport and store lubricants and liquids. It has molded-in forklift pockets for easy transporting and stacking, easy-to-read gallon indicators, and comes standard with 2-2" threaded openings on top with caps as well as 2-1" threaded openings on front of the tank for plumbing versatility.

MODEL NUMBER	GALLONS	LENGTH	WIDTH	HEIGHT	APPROX. WEIGHT
T-0075-032	75	34"	34"	25.5"	44 lbs
T-0120-032	120	34"	34"	34"	60 lbs
T-0165-032	165	34"	34"	45.5"	100 lbs



ACCESSORIES

We offer a full line of accessories to complete your Dura-LIFE® Storage System. Our new stands and pans feature 12GA galvanized steel and are the toughest on the market. The 24" stand (model #M-0120-ESMG- pictured) or deluxe 36" stand (M-0120-ESMG-36) is available with an optional drip pan (M-0120-GPAN- pictured).

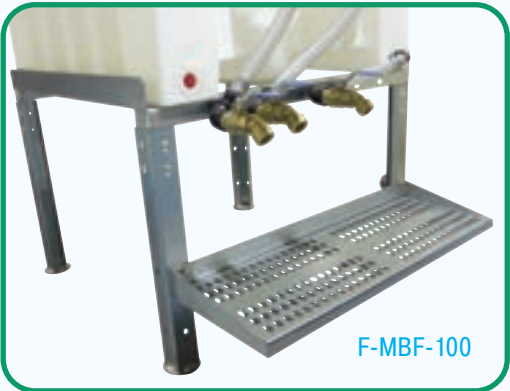
MODEL NUMBER	LENGTH	WIDTH	HEIGHT
M-0120-ESMG	35"	35"	24.25"
M-0120-ESMG-36	35"	35"	36"



M-0120-GPAN

Since all of our tanks are stackable, we offer single (F-SGFK-100), double (F-DGFK-100), and triple (F-TGFK-100- pictured right) gravity fill kits for your convenience.

Our gravity fill kits come with all necessary hoses, connectors, elbows, and clamps (faucets not included). We offer a Morrison 1" brass ball valve (F-MBF-100- pictured right) or a Banjo poly 1" ball valve (F-BLVL-100).



F-MBF-100



75 gallon can stack 3 high, 120 gallon 2 high and 165 gallon not stackable

VERTICAL STORAGE TANKS

FEATURES

Vertical storage tanks are among the most commonly used tank, fitting a wide range of applications. Dura-LIFE® tanks can be used to transport liquids as well as provide stationary storage, due to their free-standing capabilities. We offer a large range of sizes and three different styles. All vertical tanks come with a gallonage indicator, vented fill lid, and outlet fitting. *(These do not qualify for free freight on Hastings Trucks.)*



MODEL NUMBER	GALLONS	DIA.	HEIGHT	FILL SIZE	OUTLET SIZE	APPROX. WEIGHT	STYLE	TIE DOWNS
T-0095-056	95	24"	56"	6"	1.5"	35 lbs	A	NO
T-0110-042	110	31"	42"	6"	1.5"	38 lbs	A	YES
T-0165-042	165	37"	42"	6"	1.5"	50 lbs	A	YES
T-0165-059	165	31"	59"	6"	1.5"	50 lbs	A	YES
T-0220-042	220	43"	42"	6"	1.5"	60 lbs	A	YES
T-0220-072	220	31"	72"	6"	1.5"	65 lbs	A	YES
T-0300-059	300	43"	59"	6"	1.5"	75 lbs	B	YES
T-0330-042	330	53"	42"	6"	1.5"	75 lbs	A	YES
T-0500-062	500	54"	62"	6"	2"	125 lbs	C	YES
T-0500-074	500	47"	74"	6"	2"	125 lbs	A	YES
T-0925-099	925	54"	99"	8"	2"	190 lbs	A	YES
T-1100-064	1100	80"	64"	16"	2"	220 lbs	C	YES
T-1500-067	1500	90"	67"	16"	2"	240 lbs	C	NO

VERTICLE TANK STANDS

Deluxe Vertical Tank Stands

Constructed of heavy gauge steel and finished with a chemical resistant coating, we offer a complete range of stands in both short and tall models to fit your specific needs.

MODEL NUMBER	GALLONS	DIAMETER	HEIGHT	WEIGHT
M-0095-I18	95	25"	18"	50 lbs
M-0095-I38	95	25"	38"	75 lbs
M-0110-I18	110-165-220	32"	18"	65 lbs
M-0110-I38	110-165-220	32"	38"	80 lbs
M-0165-A18	165	38"	18"	100 lbs
M-0165-A38	165	38"	38"	130 lbs
M-0220-A18	220-300-B	44"	18"	115 lbs
M-0220-A38	220-300-B	44"	38"	130 lbs
M-0500-I18	500	51"	18"	130 lbs
M-0500-I38	500	51"	38"	150 lbs



Econo Vertical Tank Stands

Constructed of heavy gauge steel and finished with a chemical resistant coating, the Econo Vertical Tank Stand will handle the same weights as the Deluxe Vertical Tank Stand at an economical price.

MODEL NUMBER	GALLONS	DIA.	HEIGHT	WEIGHT
M-0110-E18	110-165-220	32"	18"	60 lbs
M-0165-E18	165-220-300	44"	18"	110 lbs
M-0500-E18	500	51"	18"	120 lbs



Skid and Tank Units

This sturdy unit is constructed with heavy gauge steel side channels and heavy wood floors, overlaying a steel constructed frame, providing a quality skid unit at an economical price. The patented Dura-LIFE® “Loaf” designed skid tank provides a very low center of gravity for stability in forklifting and transportation. A recessed sump is molded into the tank for complete drainage. All units come complete with a gallonage indicator, outlet fitting, fill lid, E.P.D.M. gasket, and threaded vent plug for a positive seal.

MODEL NUMBER	GALLONS	LENGTH	WIDTH	HEIGHT	APPROX. WEIGHT
U-0210-ESM	210	50"	46"	40"	280 lbs
U-0300-ESM	300	50"	46"	49"	395 lbs
U-0500-TES	500	50"	46"	79"	555 lbs
U-0800-ESM	800	80"	72"	54"	680 lbs



U-0300-ESM



T-0210-034

Skid Tanks

The Dura-LIFE® “Loaf” designed skid tanks can be purchased separately but will not come with all of the fittings provided for the complete skid unit. These tanks need to be contained in some sort of skid after purchase to prevent sidewall bulging. We do not offer any warranty on skid tanks alone.

MODEL NUMBER	GALLONS	LENGTH	WIDTH	HEIGHT	LID SIZE	OUTLET SIZE	APPROX. WEIGHT
T-0210-034	210	44"	40"	40"	6"	2"	90 lbs
T-0300-043	300	44"	40"	43"	6"	2"	120 lbs
T-0500-073	500	44"	40"	73"	6"	2"	175 lbs
*T-0500-047	500	71"	40"	47"	6"	2"	175 lbs
T-0800-048	800	72"	64"	48"	16"	2"	200 lbs

* Tank has no paired skid unit (sold as stand-alone tank).



T-0300-076

Horizontal Tanks

Horizontal cylinder tanks are perfect for industrial and agricultural applications. All tanks come complete with a gallonage indicator, fill lid, and outlet fitting. A horizontal stand, saddle skid, or cradle is necessary for support of the Dura-LIFE® horizontal cylinder tanks.

MODEL NUMBER	GALLONS	DIA.	LENGTH	LID SIZE	OUTLET	APPROX. WEIGHT
T-0110-046	110	30"	46"	6"	1.5"	35 lbs
T-0300-076	300	38"	76"	6"	1.5"	100 lbs
T-0500-078	500	48"	78"	6"	1.5"	150 lbs

Saddle Skid Units

Our saddle skid and horizontal tank units are low profile and come in 3 sizes. Our stands are constructed out of heavy gauge steel and finished with a chemical resistant coating and include a gallonage indicator, fill lid, and outlet fitting.

MODEL NUMBER	GALLONS	LENGTH	WIDTH	HEIGHT	APPROX. WEIGHT
U-0110-037	110	49"	32"	37"	237 lbs
U-0300-049	300	77"	41"	49"	466 lbs
U-0500-057	500	81"	52"	57"	572 lbs



U-0110-037



U-0300-087

Horizontal Tank/Stand Units

Our horizontal stands and Dura-LIFE® horizontal cylinder tanks come in 3 sizes. Our stands are constructed out of heavy gauge steel and finished with a chemical resistant coating. They include a gallonage indicator, fill lid, and outlet fitting.

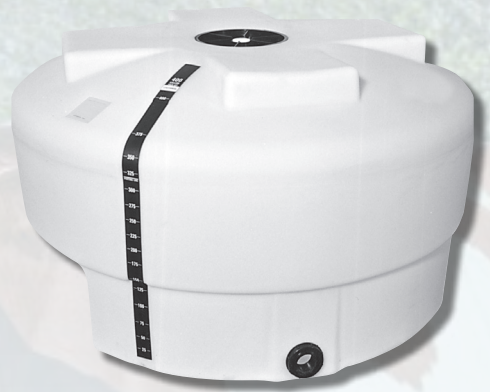
MODEL NUMBER	GALLONS	LENGTH	WIDTH	HEIGHT	APPROX. WEIGHT
U-0300-087	300	76"	39"	87"	376 lbs
U-0500-097	500	78"	49"	97"	475 lbs



SPECIALTY TANKS

Pickup Tank

Our Dura-LIFE® pickup tank's low profile and recessed lid gives better rear vision and fits all full-size pickups, even those with a toolbox. This pickup tank also comes complete with a gallonage indicator, fill lid, and outlet fitting.



MODEL NUMBER	GALLONS	DIA.	HEIGHT	LID SIZE	OUTLET SIZE	APPROX. WEIGHT	TIE DOWNS
T-0400-036	400	66"	36"	12"	2"	110 lbs	YES

Containment Tank & Skid Units

This unit is uniquely designed with safety in mind to satisfy any of your containment needs. The Dura-LIFE® skid provides two thick polyethylene walls that protect the inner 220-gallon tank, making this unit virtually indestructible. With the molded-in forklift channels, this unit is easy to handle and comes complete with a filler cap. The skid and tank can also be purchased separately (see below).

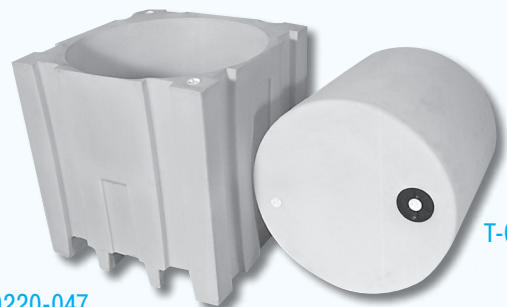
UNIT				
MODEL NUMBER	GALLONS	WIDTH	HEIGHT	APPROX. WEIGHT
U-0220-CTS	220	46"	47"	185 lbs

SKID				
MODEL NUMBER	GALLONS	WIDTH	HEIGHT	APPROX. WEIGHT
T-0220-047	220	46"	47"	125 lbs

TANK				
MODEL NUMBER	GALLONS	WIDTH	HEIGHT	APPROX. WEIGHT
T-0220-040	220	41.5"	40.5"	60 lbs



U-0220-CTS



T-0220-040

T-0220-047

FITTINGS & ACCESSORIES

Unlike many molders, we manufacture all our polyethylene Dura-LIFE® fittings to ensure the same high quality provided in our Dura-LIFE® tanks and drums. Our Dura-LIFE® fittings are made from the same field of material to ensure the same chemical resistance as our tanks and drums.

If you can't find what you need, give us a call. We offer custom fittings and accessories to meet your specific application. We also offer replacement components for our metal stands and skids upon request.



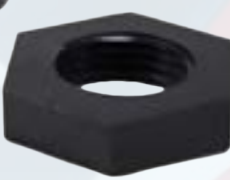
2131



S-200



2152



FITTINGS/GASKETS	
MODEL NUMBER	DESCRIPTION
F-BKHD-075	.75" Polyethylene Outlet Fitting
F-BKHD-100	1" Polyethylene Outlet Fitting
F-BKHD-125	1.25" Polyethylene Outlet Fitting
F-BKHD-150	1.5" Polyethylene Outlet Fitting
F-BKHD-200	2" Polyethylene Outlet Fitting
F-BBKHD-300	3" Polyethylene Outlet Fitting
F-EPDM-075	.75" EPDM Gasket
F-EPDM-150	1.5" EPDM Gasket
F-EPDM-200	2" EPDM Gasket

PLUGS	
MODEL NUMBER	DESCRIPTION
F-40PL-075	.75" Sch 40 PVC Plug
F-40PL-100	1" Sch 40 PVC Plug
F-40PL-150	1.5" Sch 40 PVC Plug
F-40PL-200	2" Sch 40 PVC Plug
F-DRPL-075	.75" Polypropylene Drum Plug
F-DRPL-200	2" Polypropylene Drum Plug

LIDS	
MODEL NUMBER	DESCRIPTION
F-FLCP-600	6" Filler Lid
F-FLCPA-800	8" Filler Cap Assembly
F-FLCPA-1200	12" Filler Cap Assembly
F-FLCPA-1600	16" Filler Cap Assembly



F-DRPL-200



F-FLCP-600



F-FLCPA-800



F-BKHD-150



F-EPDM-150



CUSTOM MANUFACTURING SERVICES

We offer in-house tool and die “design and build” capabilities utilizing our CNC mills and wire EDM machines to save you time and money. Other specialties include machining on six or eight spindle automatic screw machines and CNC lathes. Copper brazing, induction heat treating, zinc plating, with clear bright chromate (TUFFPLATE®) and powder coating.

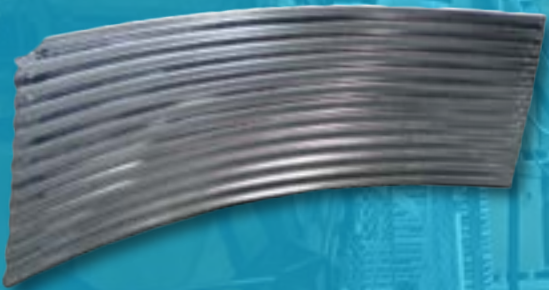
Our standards remain high by adapting to change, diversifying and developing expertise in many areas. We can be your “single source” solution for a wide variety of production requirements.



What are Custom Manufacturing Services?

Custom Manufacturing produces parts you require, to your specifications, on time and on budget. We specialize in precision metal stamping including large and small progressive dies. We can draw light or heavy gauge metals.

- ✓ CNC LATHE & MILL
- ✓ ZINC PLATING
- ✓ ROBOTIC WELDING
- ✓ WIRE EDM
- ✓ POWDER COATING
- ✓ STAMPING
- ✓ ROTO MOLDING
- ✓ ROLLING
- ✓ LASER
- ✓ PRESS BRAKE





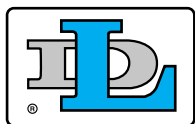
WE CURRENTLY EXPORT AND HAVE TANKS IN 42 COUNTRIES.

United States, Canada, Belgium, France and the Islands, The Netherlands, Denmark, United Kingdom, Sweden, Hungary, Poland, Spain and the Islands, Portugal, Italy, Andorra, Liechtenstein, Luxembourg, Germany, Ireland, Switzerland, Romania, Croatia, Serbia, Iceland, Finland, Slovakia, Austria, Estonia, Latvia, Lithuania, Czech Republic, Belarus, Slovenia, Montenegro, Bosnia and Herzegovina, Macedonia, Albania, Armenia, Japan, Israel, South Korea, Australia, and New Zealand.

Hastings
Equity Manufacturing
A DIVISION OF DUTTON-LAINSON COMPANY

P.O. Box 729
 1900 Summit Ave.
 Hastings, Nebraska 68902-0729

Phone: 402-462-2189 • Toll Free: 888-883-2189 • Fax: 402-462-2900
 Website: www.hastingstank.com • Email: sales@hastingstank.com



A Dependable Company Since 1886
DUTTON-LAINSON COMPANY
 Hastings, NE U.S.A. 68902 • Tel 402-462-4141 • Fax 402-460-4612
www.dutton-lainson.com • E-mail dlsales@dutton-lainson.com

